



Stick Reader Stand Alone Package



Operating Instructions

The information contained in this document contains proprietary information belonging to Tagmaster; it is protected by copyright law with regard to restrictions on use and disclosure.

This document remains the property of Tagmaster and no part of the same may be reproduced without written permission.

Tagmaster

www.tagmasterlivestock.co.uk

Tel: (01450) 370695

Fax: (01450)374360

Contents

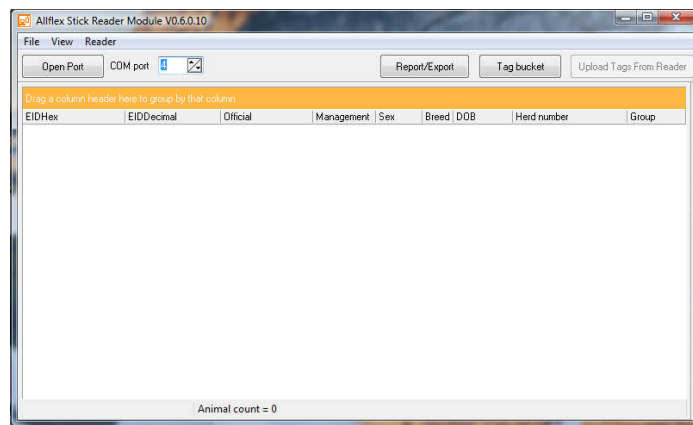
Overview	3
The Package	3
Tag Bucket Import	3
Reading Tags	4
Upload From Stick Reader.....	4
Com Port.....	4
Stick Reader Connection to PC.....	5
Groups.....	5
Populating Data	5
Reporting	6
Export.....	7
Spreadsheet	8
Deleting records from the Upload Form.....	8

Overview

1. Many farmers do not need complicated or comprehensive reporting packages for sheep or cattle but do need some method of capturing data by using EID tags and doing something with it.
2. The EID companion package for the stick reader does exactly as required by utilizing the tag bucket data allowing the record to be updated as required and utilizing tags that have been read allowing them to be exported to a spread sheet for further reporting.

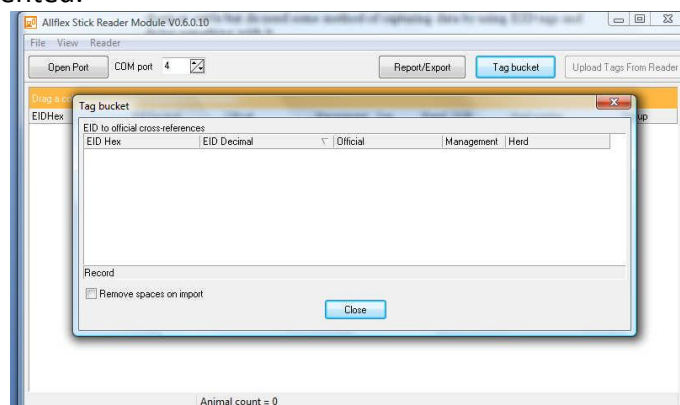
The Package

3. Launch the package by clicking on the  icon. The program interface looks like this:

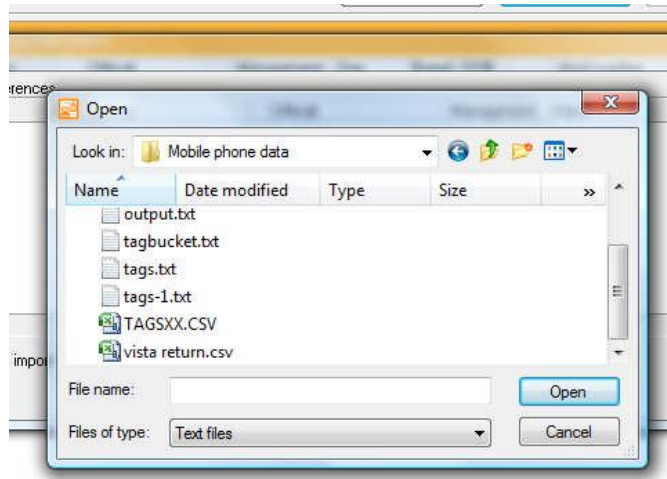


Tag Bucket Import

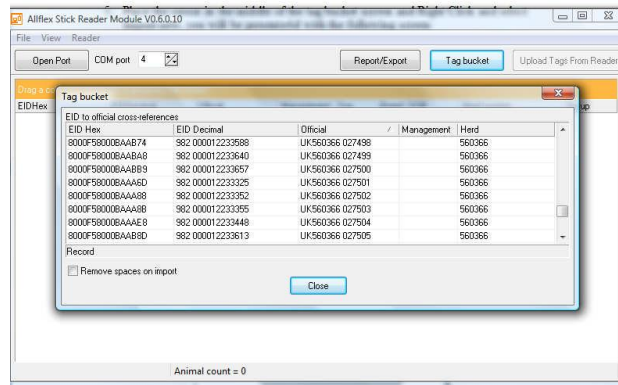
4. To load a tag bucket disk into the system click on Tag Bucket, the following screen will be presented.



5. Place the cursor in the middle of the tag bucket screen and Right Click and select Import new, you will be presented with the following screen:



6. Navigate to the folder your tag bucket data is held in, highlight it and click on open, or double click on your tag bucket disk to import it. The result should look like the screen shot below:



7. Click on close to back to the main form. You are now ready to use the package.

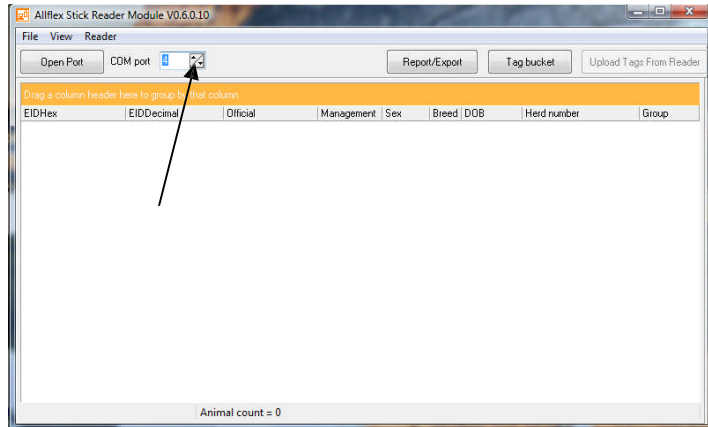
Reading Tags

8. You should take the stick reader and start reading tags. There is a function within the reader that allows you to split the sheep you read into groups sequentially so that it is easier to manage the data once it comes back into the package.

Upload From Stick Reader

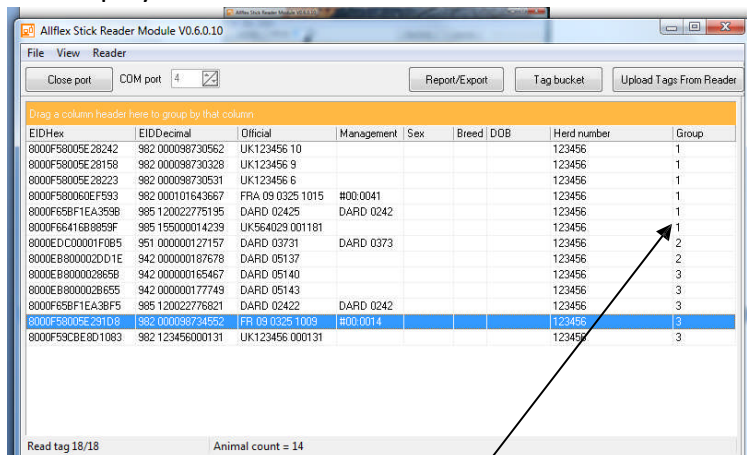
Com Port

9. The stick reader has been used to read tags and will now be downloaded into the package. Make sure that the correct Com port has been allocated by clicking on the spinner arrows on the right hand side of it:



Stick Reader Connection to PC

10. Connect the stick reader to the RS232 port via its cable and switch the stick reader on. Click on Open port and the Upload Tags from Reader button will become available on the right hand side of the screen. Click on Upload tags from Reader and the following screen will be displayed.

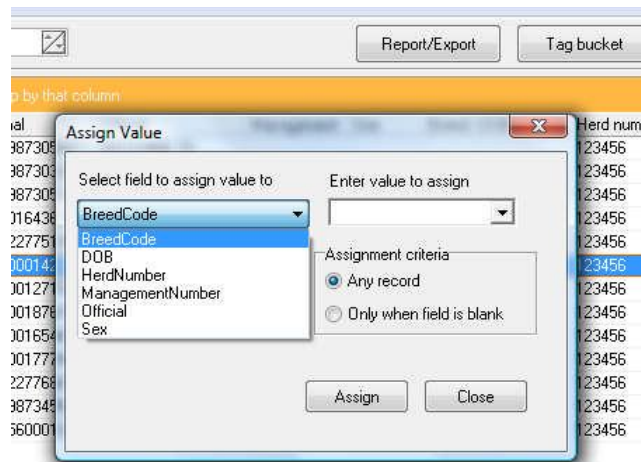


Groups

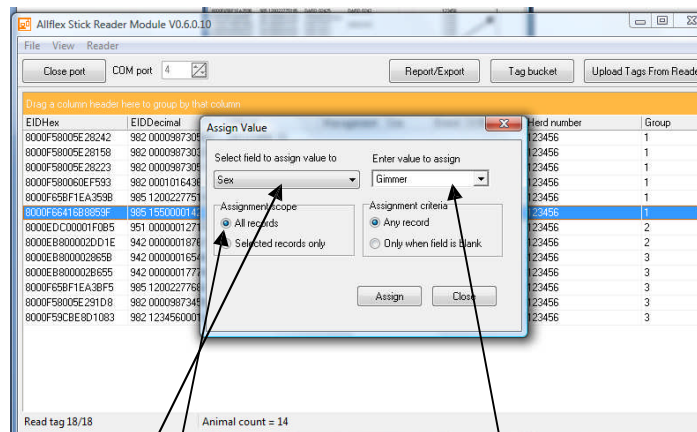
11. There are some points to Note:
 - a. Note the group's field has different groups. I have used these to show that Group 1 has had Blackleg vaccination and was moved to Brough Hill, Group 2 had Blackleg vaccination and were moved to Yarrow and group 3 were to be sold to ABP Perth.

Populating Data

- b. Some data in my screen has been completed with more data than that contained in the tag bucket. I can do this by right clicking in the form shown and selecting Assign Value. This bring up a selection menu as shown below:



- c. Select the field that you want to populate and select Enter value to Assign from the drop down list on the right hand side of the form by clicking on the down arrow.



- d. I have selected Sex And the value as Gimmer Note also that I have selected all records as I want to assign this to all records. I could have left the radio button checked in only selected records and used the normal windows functions of Shift Click or Ctrl Click to select the group of records. Continue to do this as you require as it is better to populate the records, which stay populated when for reporting and export once a new upload is done this data will not be available so it will have to be done again. Once the selection is made click on Assign and then close.

Reporting

- I have completed the screen as much as I want to for now and need to produce a report on group 1 animals. To do this I use the windows function of Shift Click or Ctrl Click to highlight the animals I need. Note that you can sort on the field headers by clicking on them. Once selected click on Report/Export and you will be presented with the following report:

EID	Official	Management	DOB	Sex	Breed	Herd number	Group
982 000098730562	UK123456 10	1	17/04/2007	Gimmer	CHX	123456	1
982 000098730328	UK123456 9		17/04/2007	Gimmer	CHX	123456	1
982 000098730531	UK123456 6		17/04/2007	Gimmer	CHX	123456	1
982 000101643667	FRA 09 0325 1015	#00:0041	17/04/2007	Gimmer	CHX	123456	1
985 120022775195	DARD 02425	DARD 0242	17/04/2007	Gimmer	CHX	123456	1
985 155000014239	UK564029 001181		17/04/2007	Gimmer	CHX	123456	1

Number Animals: 6

13. Note that I have 6 animals in group 1 which tallies correctly with the upload form. I now want to export this to a spreadsheet.

Export

14. Click on the Disk Icon and a save report form will be displayed, select the correct folder and if you want to save it and then click on save as type, I have selected

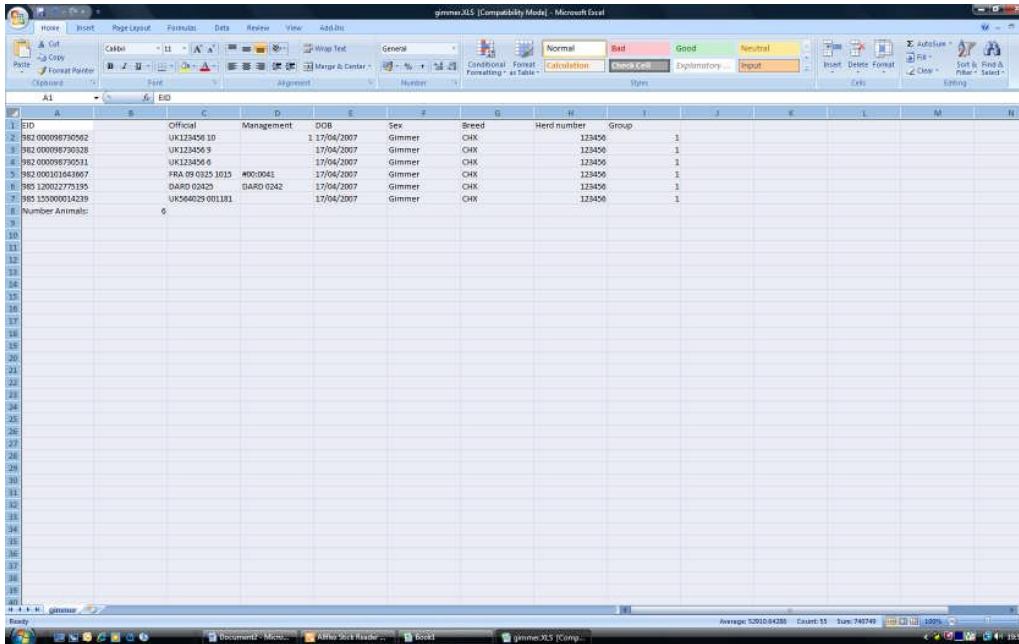
EID	Official	Management	DOB	Sex	Breed	Herd number	Group
982 000098730562	UK123456 10	1	17/04/2007	Gimmer	CHX	123456	1
982 000098730328	UK123456 9		17/04/2007	Gimmer	CHX	123456	1
982 000098730531	UK123456 6		17/04/2007	Gimmer	CHX	123456	1
982 000101643667	FRA 09 0325 1015	#00:0041	17/04/2007	Gimmer	CHX	123456	1
985 120022775195	DARD 02425	DARD				123456	1
985 155000014239	UK564029 001181					123456	1

Number Animals: 6

Spreadsheet (XLS) to save it as an Excel spreadsheet. Give the file a meaningful name and remember where you saved it. You can save it in 6 formats as required and you can do this from this screen without closing the report. However, we want to close so click on close at the top of the form.

Spreadsheet

15. Click on close and then open your spreadsheet package and the report now looks like this in Excel:



EID	Official	Management	DOB	Sex	Breed	Herd number	Group
982 000098790902	UK123450 10		1 17/04/2007	Gimmer	CHK	123450	1
982 000098790908	UK123450 9		17/04/2007	Gimmer	CHK	123450	1
982 000098790911	UK123450 6		17/04/2007	Gimmer	CHK	123450	1
982 000101843607	FRA 09 0325 1013 #00:0041		17/04/2007	Gimmer	CHK	123450	1
985 120022779135	DARD 02425	DARD 0242	17/04/2007	Gimmer	CHK	123450	1
985 15000014239	UK564029 001181		17/04/2007	Gimmer	CHK	123450	1
Number Animals:	6						

16. You will now be able to do any calculations or whatever is required within the spreadsheet. If you selected to save as a word document and the group was a sold to or a medicine record you could not this and place the details into your movements book and drug book with the details written on the pages. For example 'Sold to APB Perth 17 April 2008' and/or 'Drug Blackleg 5ml'

Deleting records from the Upload Form

17. Once you have finished with the upload form you can close it down but the data will remain in this form until you carry out another upload which will overwrite the data with the new tags you have read. You can also delete the records by Right Clicking, Select All, Right clicking and Delete selected Records.