



Anidata ES Stick Reader Interface

Operating Instructions



The information contained in this document contains proprietary information belonging to Tagmaster; it is protected by copyright law with regard to restrictions on use and disclosure.

This document remains the property of Tagmaster and no part of the same may be reproduced without written permission.

Tagmaster

www.tagmasterlivestock.co.uk

Tel: (01450) 370695

Fax: (01450)374360

Contents

Contents	2
General	3
Stick Reader/ES Interface.....	3
Connection Methods.....	4
RS232.	4
Com Port.....	4
Import Tags	4
Logging Actions	5
Merging Data.....	6
Bluetooth	6
Bluetooth Connectivity.....	7
Dongle	7
Advanced Configuration	7
Stick Configurator	7
Using the Stick Reader	8

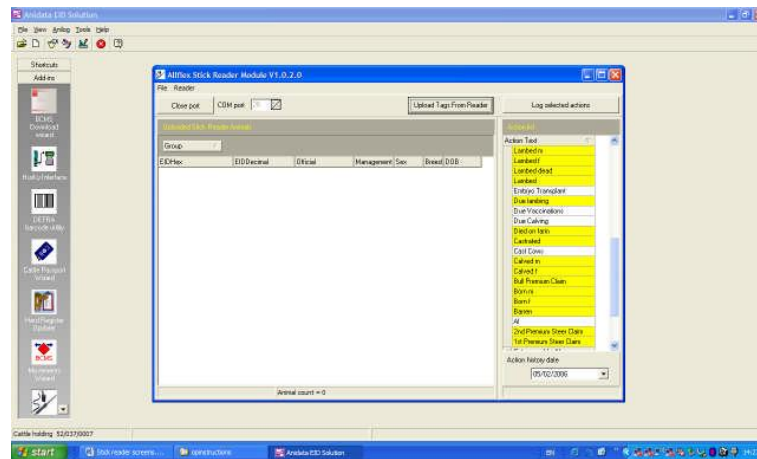
Connection Methods

5. There are 2 methods to connect the stick reader to ES, RS232 or Bluetooth. Each will be described below:

RS232.

Ensure that the RS232 cable is connected to the PC and the other end is connected to the Stick Reader RS232 end cap.

To make a connection to ES click on the Stick Reader Icon in the add-ins and you will see the following screen:

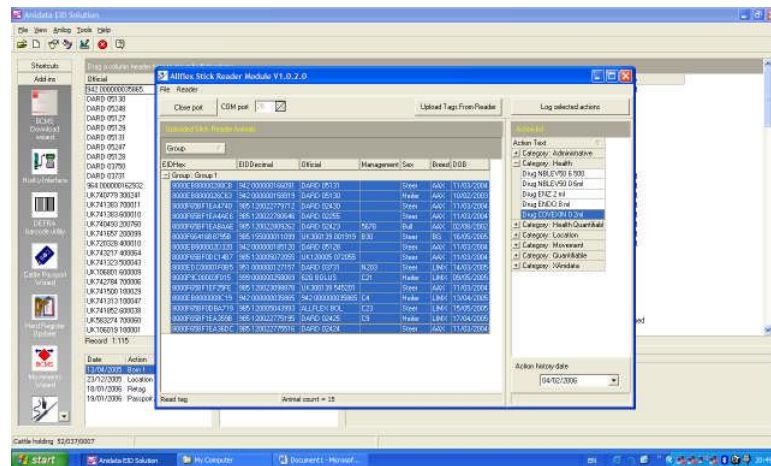


Com Port

The stick reader will have to be switched on. If the correct port is shown in the Com Port box the system will be automatically connected. If not, change the com port number to the correct com port by clicking on the up or down arrow. Once the correct com port is entered click, close port and open port to make the connection.

Import Tags

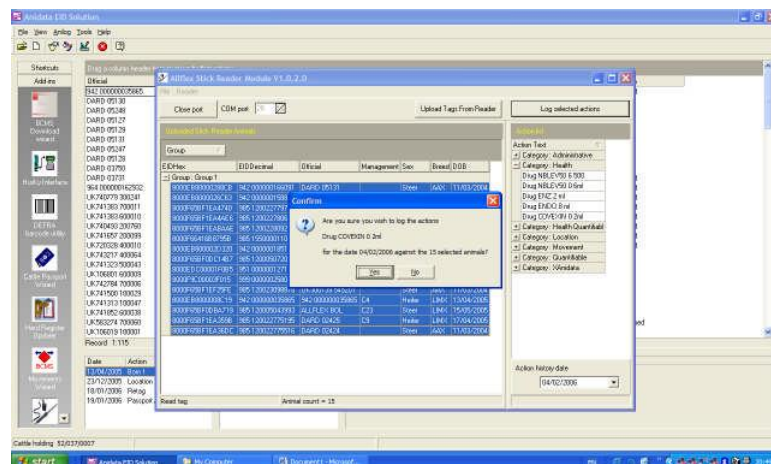
To import the tags, click on the button Upload tags from Reader. The data will be imported into the form as shown below and you will be asked if you want to clear the stick reader's memory. Say Yes to this action. (This will clear the stick's memory ready for use the next time. If you do not do this then the next time you upload you will bring in the same tags again).



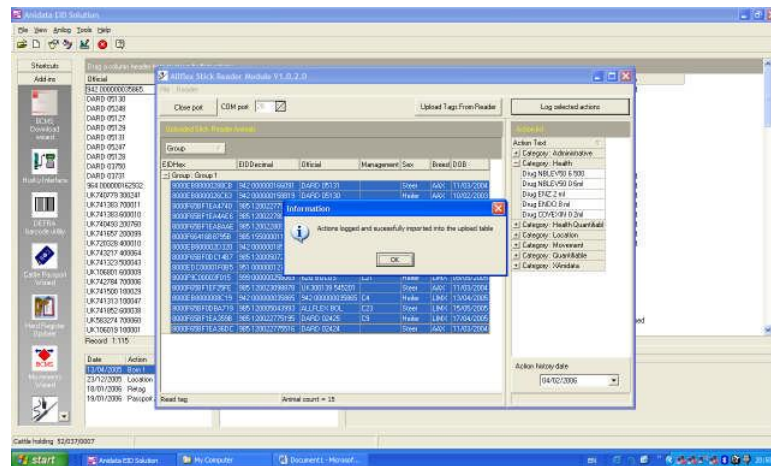
Logging Actions

When uploaded from the Stick Reader the data will be populated in the fields as is shown below. One or multiple actions can be logged against the animals by highlighting all the records in the screen. You will need to select the actions one at a time and log the action before logging another. To do this right click and select all – all records will turn blue. Move to the right hand side of the form and select an action and date and then click on 'Log Selected Actions'.

You will then be presented with the following screen:



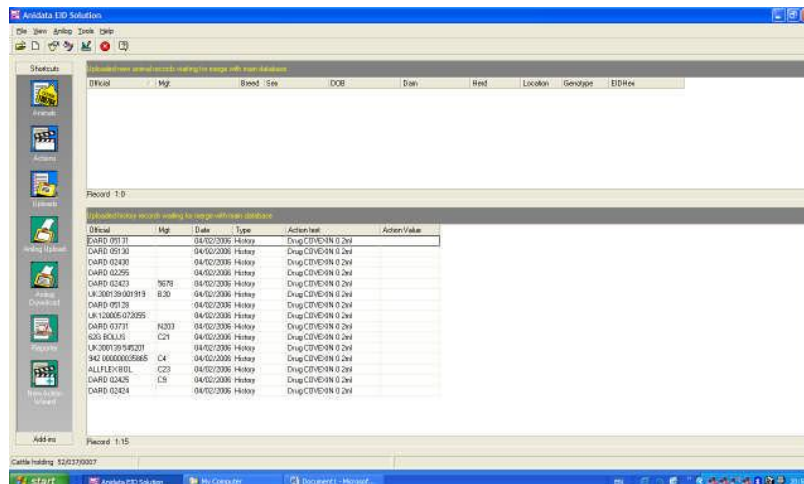
Click on Yes and you will be presented with the following screen:



Click on OK and if you have finished logging actions, then close the form down by clicking on the cross on the right hand side of the form.

Merging Data

Move to the 'Uploads' screen in Shortcuts and you will see the data that has been uploaded from the reader in the lower part of the form. Place the cursor on the lower part of the form, right click and select Merge records. The data will then be saved permanently against the animals records. See below:



Bluetooth

All of the screens shown above are also relevant to the Bluetooth module only there is no cabled connection.

Bluetooth Connectivity

Dongle

A Bluetooth dongle is required to effect the connection to the stick reader. This dongle should be installed along with its driver software. This will not be covered here.

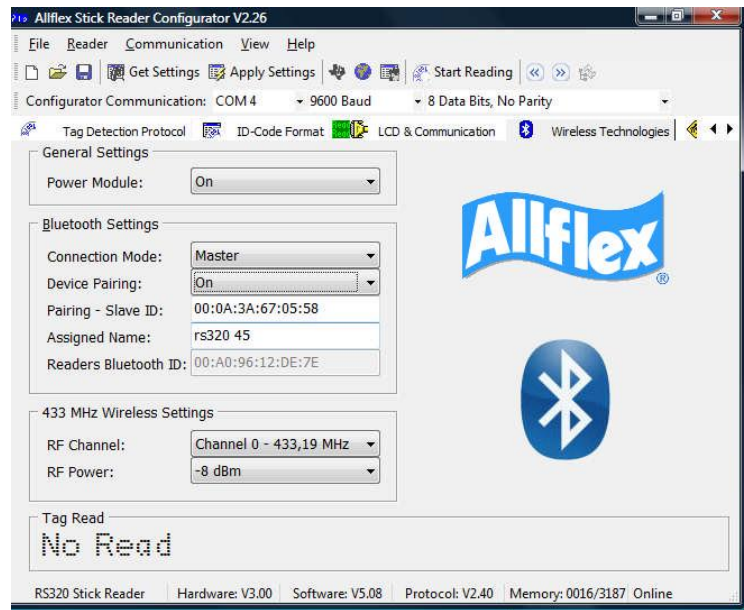
Once the dongle has been installed the stick reader should be configured for use with Anidata ES. The stick will be configured correctly when shipped but there are two procedures that need to be followed to ensure that the stick connects automatically when switched on.

Advanced Configuration

- a. Right click on the Bluetooth icon in the system tray. Right click and select Advanced configuration, Click on hardware. Write down the Mac Address of the dongle: It will be a series of 6 sets of 2 characters separated by (:). Most Bluetooth dongles also have the Mac address printed on the rear – for example 00:0A:3A:67:05:58 (Belkin dongles do not have the (:)) between the numbers. Make sure you buy a Class 1 device.

Stick Configurator

- b. Close down the Advanced configuration and open up the stick Configurator. Go to Wireless technologies. Change the Connection Mode to Master, change the device pairing to On and enter the Mac address into Pairing - Slave ID field. Then click on Apply Settings.



Using the Stick Reader

You are now ready to use the stick reader. You can connect it by Bluetooth to the PC simply by ensuring that Bluetooth is enabled on the PC and the stick reader has the Bluetooth end cap installed. By switching the stick reader on it will automatically pair with the PC. Open up the Stick reader module in Anidata ES and select the correct com port and then click on Open port and the stick reader will be connected. Data can be transmitted up to 100 meters.

Alternatively you can use the stick reader as a data capture device by reading the EID tags. Once finished come back to the office and connect to the PC by RS232 or Bluetooth and upload the data to the Anidata stick reader module in Add ins.